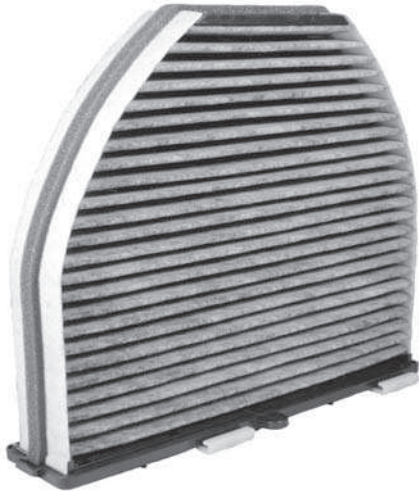




**Application: Application: Aplicación:**

Mercedes Benz C250, C300, C350, C63AMG and GLK350



**Location of cabin filter:**

Under the dash on the passenger side of the vehicle behind filter access door.

**Tools:**

Not required.

**To remove existing filter:**

1. Look under the glove box and remove the panel by removing the three clips securing it at the front.
2. You may want to place something on the floorboard to catch any debris that may fall out of the filter during removal.
3. Once the panel is removed, remove the cover from the bottom of the cabin filter housing. It is held in place by a locking clip that will slide towards the rear of the vehicle.
4. To remove the old filter, pull straight down and out of the housing.
5. Slide the new filter into place.
6. Replace the housing cover and slide the locking clip toward the front of the vehicle.