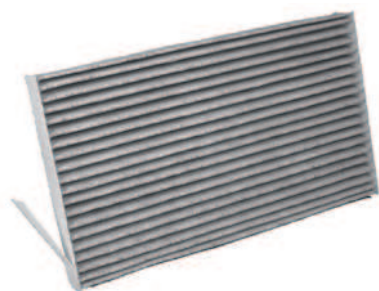




Application: Application: Aplicación:

Nissan Cube



Location of cabin filter:

Behind glove box on the passenger side of the vehicle.

Tools: Phillips-head screwdriver and possibly a razor knife.

To remove existing filter:

1. With glove box closed remove the two screws at the bottom and each end of the glove box. (Fig 1) If this is first time replacement you may need to use the razor knife and cut to zip ties at the bottom of the glove box where you removed the screws. (Fig 2) If you do not have the zip ties just move to the next step.
2. Open the glove box and remove the four screws securing the top of the glove box. (Fig 3) Also remove the two screws inside the glove box toward the bottom. (Fig 4)
3. Remove complete glove box assembly. (Fig 5)
4. In the void left by the glove box assembly, look towards the center console and locate the cabin filter housing cover. Unlatch and remove the cover. (Fig 6)
5. Remove the dirty filter.
6. Install new filter.
7. Re-install the cabin filter cover and make sure it is secure.
8. Reposition the glove box assembly.
9. With glove box open, re-install the four screws at the top and the two screws inside the glove box toward the bottom.
10. Close the glove box and re-install the two screws at the bottom of the glove box.

